



GRADE C

Pattern Name	Content	Weight	Ends / Picks	Directional	Flammability*	Cleaning Code
AXIS	56% P.I. Recycled Polyester ¹ , 44% P.C. Recycled Polyester ²	10.0 oz / lin yd	145 / 34	Yes	ASTM E-84 Cal. TB 117-2013 NFPA 260 Class 1 UFAC Class 1	W-S
CUSP	58% P.I. Recycled Polyester ¹ , 32% P.C. Recycled Polyester ² , 10% Polyester	10.9 oz oz / lin yd	145 / 36	Yes	ASTM E-84 Cal. TB 117-2013 NFPA 260 Class 1 UFAC Class 1	;W-S
HINGE	43% P.I. Recycled Polyester ¹ , 34% Polyester, 23% P.C. Recycled Polyester ²	11.5 oz oz / lin yd	145 / 34	Yes	ASTM E-84 Cal. TB 117-2013 NFPA 260 Class 1 UFAC Class 1	W-S
TIER	57% Polyester, 28% P.I. Recycled Polyester ¹ , 15% P.C. Recycled Polyester ²	13.9 oz oz / lin yd	145 / 31	Yes	ASTM E-84 Cal. TB 117-2013 NFPA 260 Class 1 UFAC Class 1	W-S

Roll Width - 66"

Axis, Cusp and Hinge provide fabric options for reducing a negative impact on the environment.
¹ P.I. Recycled Polyester = Post Industrial Material
² P.C. Recycled Polyester = Post Consumer Material

All patterns in this collection are directional fabrics. Please use caution when cutting and applying.

U.L. Recognized Components: All patterns in this collection can be applied without need for further testing to any office panel system which has been authorized for use with fabrics included in UL's Fabric Recognition Program.

All patterns in this collection **meet or exceed** ACT® Performance Guidelines.



Dye lots may vary from samples shown. Final determination of the suitability of this product for an application rests with the user.

Flammability: This term and any corresponding data refer to the typical performance in the specific tests indicated and should not be construed to imply the behavior of this or any other material under actual fire conditions.

Proposition 65 Warning: This product may contain chemicals known to the State of California to cause cancer, birth defects and other reproductive harm.

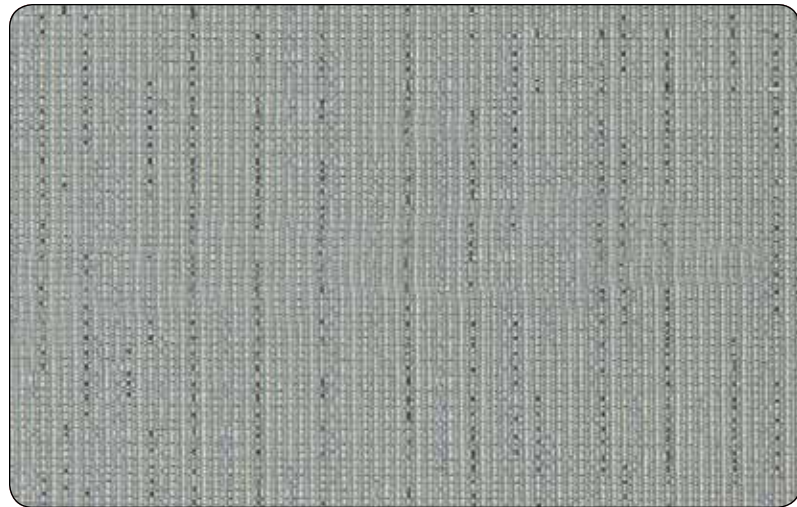
GRADE C



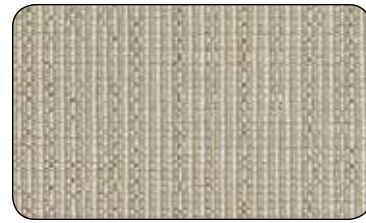
235 SOUTH 56TH STREET • CHANDLER, ARIZONA 85226
TOLL FREE: 800-280-5000 • www.RSIsystemsurniture.com

To order memo samples please email RSIsamples@burchfabrics.com.

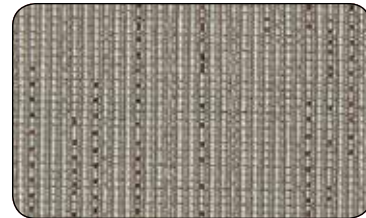
AXIS 



1009361 Chambray



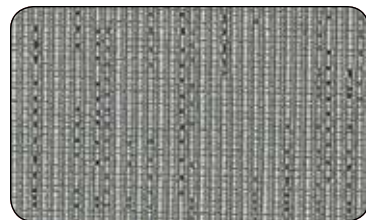
1009359 Dune



1009363 Fossil



1009360 Silver

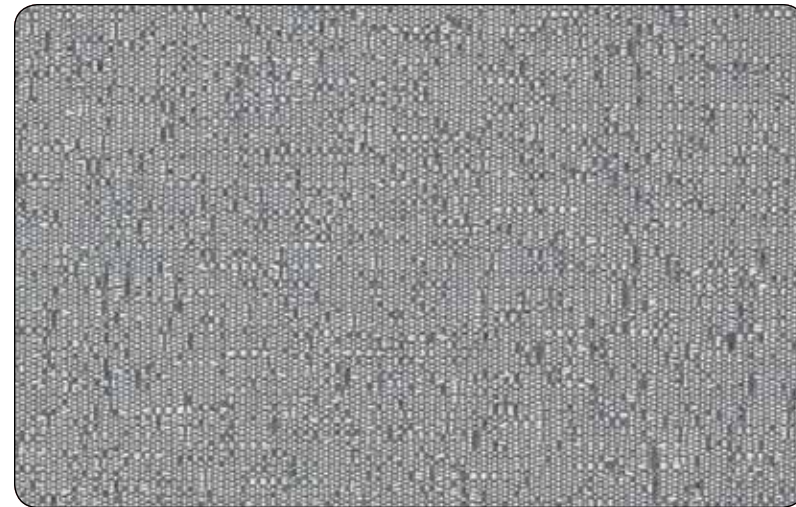


1009362 Bluestone



1009364 Sepia

HINGE 



1009376 Azure



1009371 Pearl



1009372 Ecru



1009373 Earl Grey

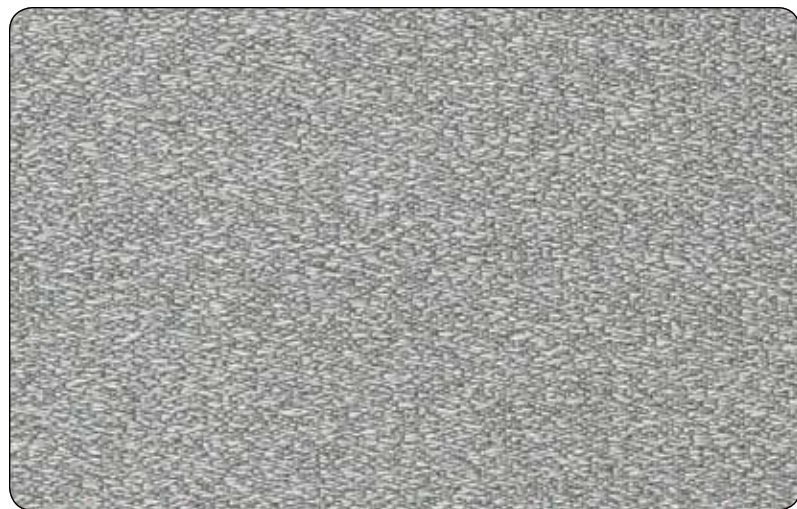


1009375 Shale



1009374 Mink

CUSP 



1009367 Oasis



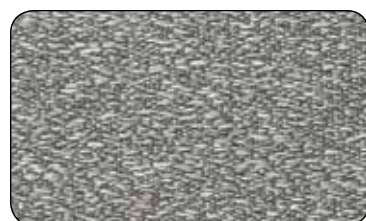
1009365 Putty



1009366 Fawn



1009368 Concrete

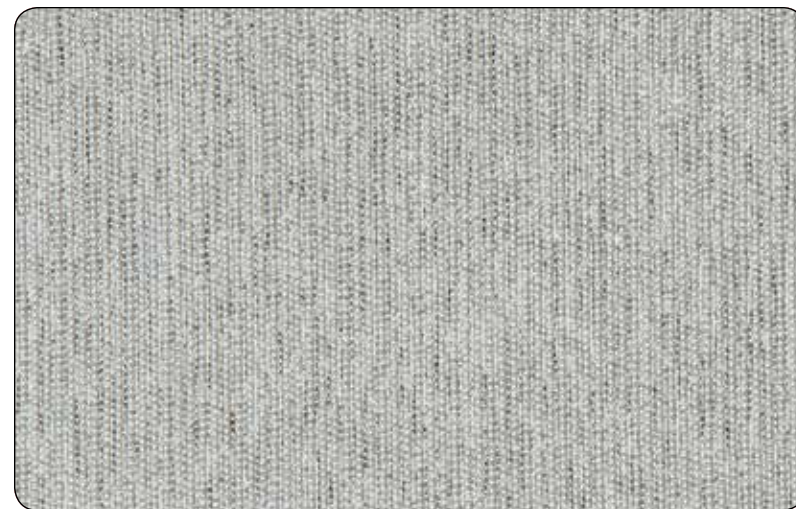


1009369 Quarry

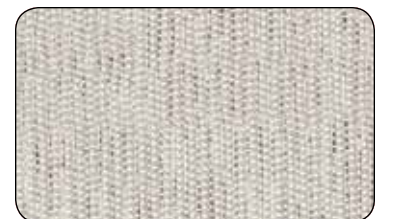


1009370 Mercury

TIER



1009378 Rain



1009382 Champagne



1009381 Chino



1009377 Sterling



1009379 Stone



1009380 Ecru