



## GRADE B

Pattern Name	Content	Weight	Ends / Picks	Directional	Flammability*	Cleaning Code
ALLIANCE	42% Polyester, 38% P.I. Recycled Polyester <sup>1</sup> , 20% P.C. Recycled Polyester <sup>2</sup>	10.4 oz / lin yd	145 / 48	Yes	ASTM E-84 Cal. TB 117-2013 NFPA 260 Class 1 UFAC Class 1	W-S
COALITION	41% Polyester, 38% P.I. Recycled Polyester <sup>1</sup> , 21% P.C. Recycled Polyester <sup>2</sup>	10.7 oz oz / lin yd	145 / 47	Yes	ASTM E-84 Cal. TB 117-2013 NFPA 260 Class 1 UFAC Class 1	W-S
COLLABORATE	42% Polyester, 38% P.I. Recycled Polyester <sup>1</sup> , 20% P.C. Recycled Polyester <sup>2</sup>	7.8 oz oz / lin yd	145 / 49	Yes	ASTM E-84 Cal. TB 117-2013 NFPA 260 Class 1 UFAC Class 1	;W-S
COLLECTIVE	56% P.I. Recycled Polyester <sup>1</sup> , 44% P.C. Recycled Polyester <sup>2</sup>	10.6 oz oz / lin yd	145 / 45	Yes	ASTM E-84 Cal. TB 117-2013 NFPA 260 Class 1 UFAC Class 1	W-S
UNISON	50% P.I. Recycled Polyester <sup>1</sup> , 27% P.C. Recycled Polyester <sup>2</sup> , 23% Polyester	10.8 oz oz / lin yd	145 / 47	Yes	ASTM E-84 Cal. TB 117-2013 NFPA 260 Class 1 UFAC Class 1	W-S

Roll Width - 66"



All patterns in this collection provide fabric options for reducing a negative impact on the environment.

<sup>1</sup> P.I. Recycled Polyester = Post Industrial Material  
<sup>2</sup> P.C. Recycled Polyester = Post Consumer Material



All patterns in this collection are directional fabrics. Please use caution when cutting and applying.



**U.L. Recognized Components:** All patterns in this collection can be applied without need for further testing to any office panel system which has been authorized for use with fabrics included in UL's Fabric Recognition Program.

All patterns in this collection **meet or exceed** ACT® Performance Guidelines.



\*ACT® Registered Certification Marks

Dye lots may vary from samples shown. Final determination of the suitability of this product for an application rests with the user.

**\*Flammability:** This term and any corresponding data refer to the typical performance in the specific tests indicated and should not be construed to imply the behavior of this or any other material under actual fire conditions.

Proposition 65 Warning: This product may contain chemicals known to the State of California to cause cancer, birth defects and other reproductive harm.

GRADE B



235 SOUTH 56TH STREET • CHANDLER, ARIZONA 85226  
TOLL FREE: 800-280-5000 • [www.RSIsystemsurniture.com](http://www.RSIsystemsurniture.com)

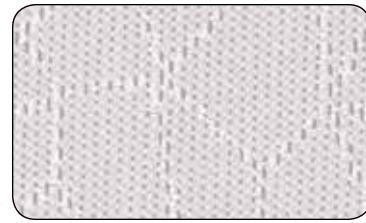
To order memo samples please email [RSIsamples@burchfabrics.com](mailto:RSIsamples@burchfabrics.com).



COLLABORATE 



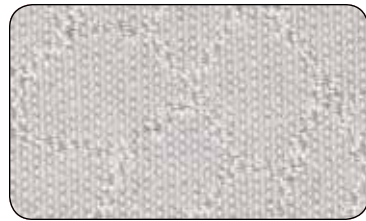
7054 Slate



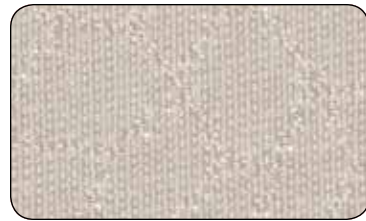
7056 Oyster



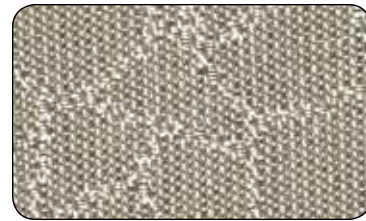
7057 Latte



7055 Moon Rock

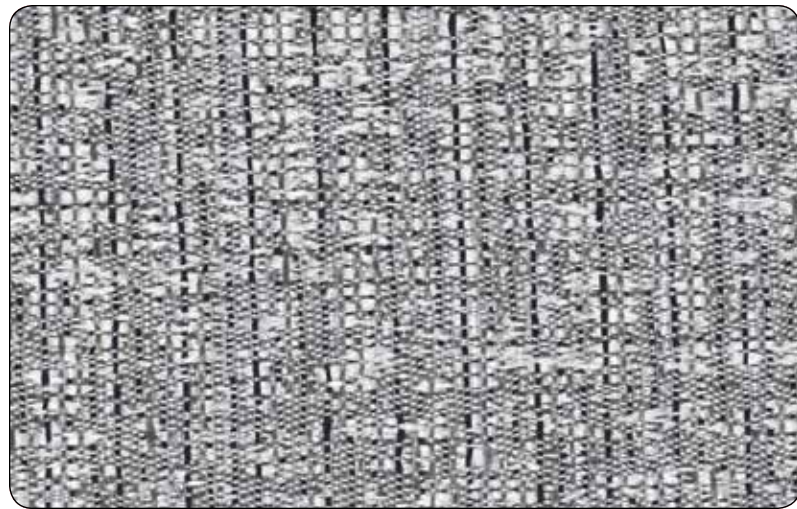


7059 Linen

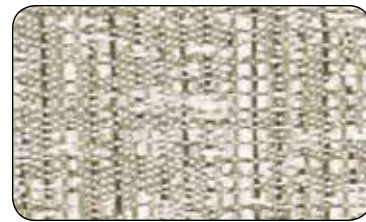


7058 Fawn

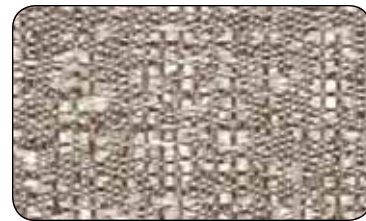
UNISON 



7315 Haze



7317 Ecrú



7318 Putty



7316 Halo

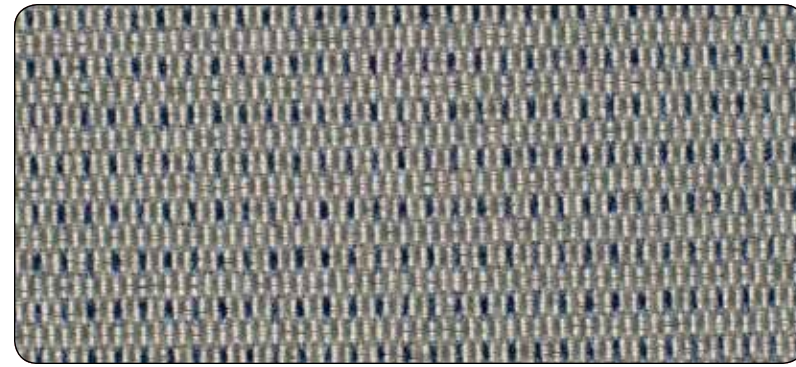


7314 Flint

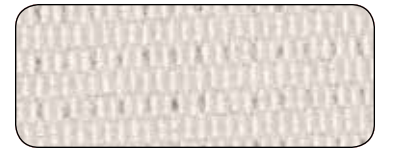


7313 Suede

COLLECTIVE 



7928 Storm



7926 Pearl



7927 Aluminum



7931 Sand Dollar

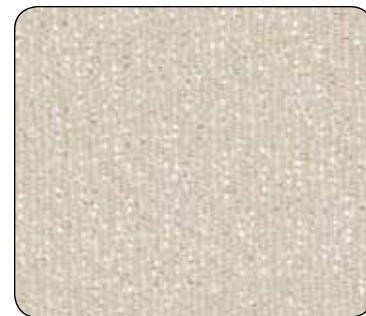


7930 Jute



7929 Driftwood

ALLIANCE 



7218 Champagne



7217 Taupe



7219 Alloy

COALITION 



7130 Pewter



7128 Iced



7133 Shimmer



7129 Tinsel



7131 Heirloom



7132 Soft Bronze