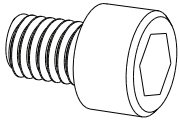
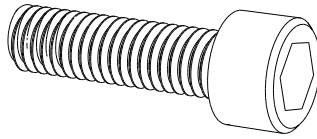


FIG: 5.01



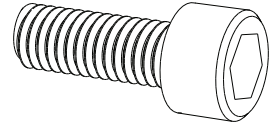
PART: PX3-SCREW-M6-S-6  
 SIZE: M6 x 6mm SOCKET SCREW  
 DESC: X3 ADD-ON FRAME SCREW

FIG: 5.02



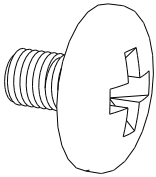
PART: PX3-SCREW-M8-S-30  
 SIZE: M8 x 30mm SOCKET SCREW  
 DESC: X3 PANEL-TO-PANEL SCREW

FIG: 5.03



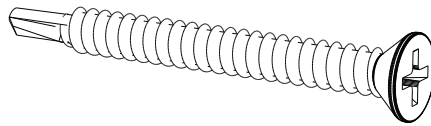
PART: PX31-SCREW-M8-S-20  
 SIZE: M8 x 20mm SOCKET SCREW  
 DESC: X3 / X31 POST SCREW

FIG: 5.04



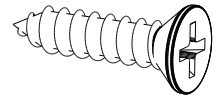
PART: PX3-SCREW-M8-P-12  
 SIZE: M8 x 12mm LARGE PHILLIPS SCREW  
 DESC: X3 END TRIM SCREW

FIG: 5.05



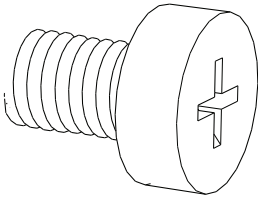
PART: PX-SCREW-10-P-2-SELFTAP  
 SIZE: #10 x 2" SELF-TAPPING PHILLIPS  
 DESC: FRAMELESS GLASS BRACKET SCREW

FIG: 5.06



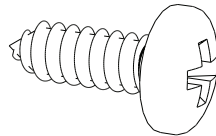
PART: PHW-SCREW-8-P-3/4  
 SIZE: #8 x .75" PHILLIPS SCREW  
 DESC: MOUNTING BRACKET SCREW

FIG: 5.07



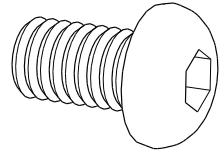
PART: PHW-SE-SCREW  
 SIZE: PHILLIPS HEAD SPECIALTY SCREW  
 DESC: X3 FULL HEIGHT SHELF END SCREW

FIG: 5.08



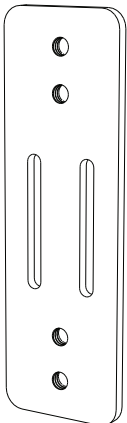
PART: PHW-FD-SCREW  
 SIZE: #8 x .625" PHILLIPS SCREW  
 DESC: X3 FLIPPER DOOR MOUNTING SCREW

FIG: 5.09



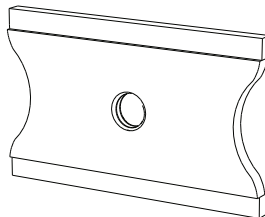
PART: PX3-SCREW-M6-S-12  
 SIZE: M6 x 12mm SOCKET SCREW  
 DESC: X3 LOW SHELF END SCREW

FIG: 5.10



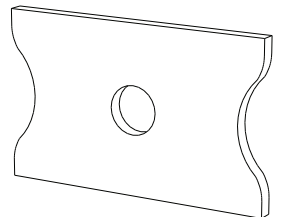
PART: PX3-AO-BRKT  
 DESC: ADD-ON FRAME CONNECTING BRACKETS  
 SCREW: SEE (FIG: 5.01)

FIG: 5.11



PART: PX3-CON-A  
 DESC: CON-A PANEL BRACKET (THREADED)

FIG: 5.12



PART: PX3-CON-B  
 DESC: CON-B PANEL BRACKET (NON-THREADED)